



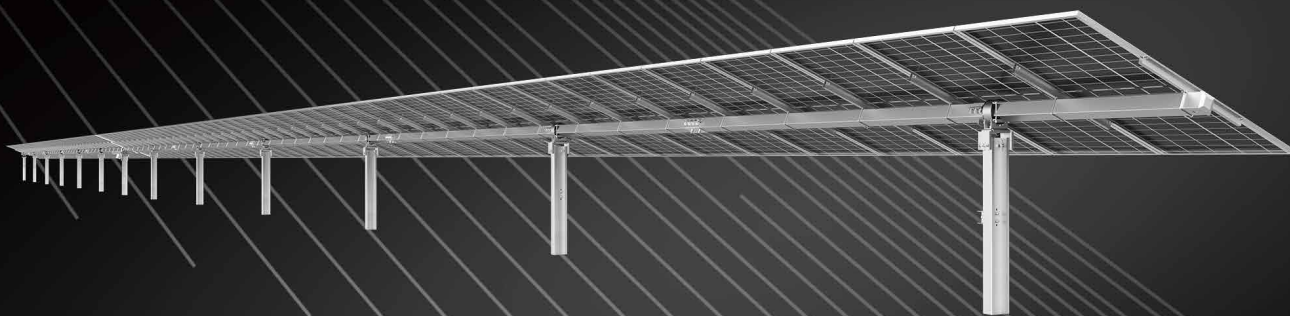
ANTAI



TAI Simple

Slew-Drive Single-Axis
Independent Tracking System—1P





Design Specification

TrackingType	Horizontal Single-Axis 1 Module-in-Portrait Tracker
Drive Type	Single Point Slew drive
Motor Type	24V DC Motor
String Voltage	1000 V or 1500 V (DC)
Tracker Length	85m - 95m
Tracker Configuration	3 of 1500V strings
Module Number	90 modules, depending on module size
Ground Coverage Ratio (GCR)	>25%
Modules Support	All Commercial Modules (210/182/166)
Stow Position	25°
Tracker Rotation Range	±60° (±50° Optional)
Operating Temperature Range	-30 °C to 60°C
Foundation Type	Driven Pile / Concrete / PHC
Materials	Pre-Galvanized/Hot-dipped Galvanized/Magnesium Zinc Coated Steel
Allowable Wind Speed	Up to 47 m/s per ASCE 7-10
Onsite Training	Included
Installation requirement	No special tools required
Slope Tolerances	North-South 11° (20%)
Warranty	5 year Drive and Control 10 year Structure

Electronics And Controls

Control System	1 controller per tracker
Power Supply	One 1500VDC/1000VDC String Powered, 850/550VAC Inverter Powered, Plant Service Power, Backup Lithium Battery
Solar Tracking Algorithm	Astronomical Algorithms+Intelligent Algorithms
Controller Energy Consumption	0.08 kWh/Day
Tracking Accuracy	±2°
Communications	Zigbee Wireless Mesh Network/ Ethernet or RS485 Cable
Nighttime Stow	Yes
Backtracking	Yes
Certifications	UL 3703 / CE / UL 2703 / IEC 62817

